

PORTLAND CENTER STAGE **AT THE ARMORY**

Social Story

Welcome to Portland Center Stage
at The Armory's Sensory-Friendly
Performance of *The Curious Incident
of the Dog in the Night-Time*.



photo: patrick weishampel



The lobby will likely be filled with people waiting to get into the theater just like you.

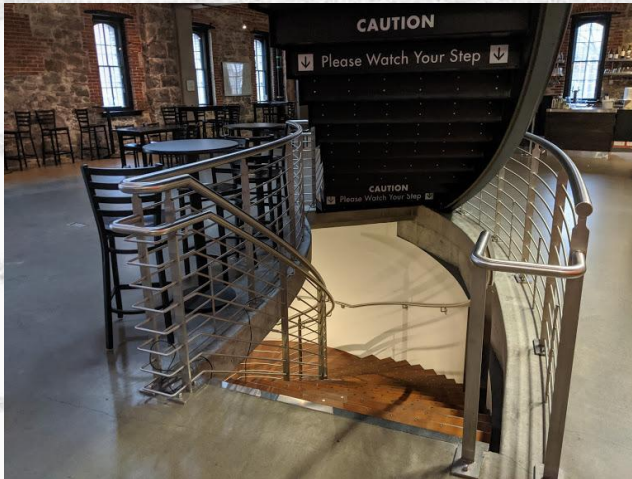
As you enter The Armory theater, you will find yourself in our lobby.





In the lobby, you can find
bathrooms to the right
of The Armory Bar,
As well as downstairs.

We also have water
fountains if you need one.



Here is our Box Office.
This is where you can get
your tickets for the show.

When the show is about to
begin, an announcement will
be heard letting everyone
know that the doors to the
seating area have opened.



On the second floor, we have a quiet zone for people who need a break.



USHERS

These are some of the ushers that will be helping you. They will scan your ticket and can help you to your seat.

They can give you directions on where to go if you need help.





- When it is time to go inside, the usher will scan your ticket. You will then go to your seat. The ushers can help you find your seat.
- You will then see the stage. When the play starts, you will see the stage lights go down and then come right back up and the cast will be on the stage.
- While you are in your seat, you can use what you need to keep you comfortable such as your headphones or a favorite item.

Story Summary

Christopher is an exceptionally intelligent, neurodivergent 15-year-old boy. When the story begins, it is seven minutes after midnight and Christopher is under suspicion of killing his neighbor's dog, Wellington, with a garden fork. Determined to find the true culprit, Christopher carefully records each fact of the crime. Ultimately, his detective work takes him on a deeply personal quest that upturns his world.

The dogs you see in the play are **NOT REAL**. You will also see Christopher's pet rat. None of the animals are real. **No dogs or rats were hurt during this play.**

The story takes place in the small town of Swindon. This is located in South West England.

Christopher lives in Swindon. During his journey, he will visit other places, such as a train station and the city of London.

As you follow Christopher's journey, you will hear a number of different English accents, such as Cockney and Standard British.



The Story



This is Jamie Sanders. He plays Christopher, the main character, who is a neurodivergent 15-year-old boy. He goes on a journey to solve the mystery of who killed his neighbor's dog.



This is a picture that is similar to the production you will see. At the front of the photo, you see Christopher and his dad, Ed, talking. In the background, you see Christopher's teacher. Her name is Siobhan, and she helps narrate the story.

You will see many people during the story. There are 10 actors and some of them play more than one character.



Sometimes you might hear yelling and swearing, but the actors are pretending.



Christopher will find out some upsetting news that causes him to meltdown. He gets upset and cries. He yells and hits himself. It is an emotional scene.

The actor playing Christopher is pretending to be upset.

Intermission

There will be a 15 minute intermission halfway through the story. This is your chance to take a break, stretch your legs, visit the bathroom, or get some water.

Christopher will be going to a train station during the story. In this picture, he is at the station, trying to figure out what to do next. He has his pet rat, Toby, with him.



At the train station, **there will be a lot of lights and sounds.** If you are uncomfortable, you can cover your ears or lower your eyes.

We have turned the volume down and won't have the lights as bright. If you feel like you need a break, you can take some time in the quiet zone.

Christopher will be using his own ways to calm himself when he gets uncomfortable during these scenes. He will get through it.



In this picture, Christopher is riding the train and talking about all the things he can see from the train.



Christopher will be talking to police officers in the play.

Christopher warns the officers that he does not like being touched.



Christopher and his mother reunite during the story. They work through some issues together.



There is some yelling in these scenes. Remember it is only pretend. There is also a radio with static sound. You can cover your ears if it bothers you.



Christopher will use his calming skills throughout the play. He loves math and you will hear about that in the story. To calm himself, he will count numbers. He also talks to himself to get him through situations that make him anxious.



This is Christopher and his parents working together and making plans for the future. In the box, you see one of the dogs in the play. Remember that none of the animals are real.



When the play is over the actors will come out and take a bow. You can clap. You can even stand up and cheer to show how much you liked the play. Other audience members will be clapping too.

This picture is at the end of the play, when Christopher explains his favorite math problem. It is fun and high energy, almost like a dance party.

PORTLAND CENTER STAGE **AT THE ARMORY**

We would like to THANK YOU for coming to see our play!
We hope you enjoy it and visit us again to see another play.

We also want to thank our friends at Kansas City Repertory Theatre
for sharing the photos and materials used in this guide.